

DELTA®

DELTA® protects property. Saves energy. Creates comfort.



COSELLA DÖRKEN

DELTA®-MS (Membrane System)

Foundation Waterproofing Membrane.™

Below grade foundation waterproofing for masonry and poured concrete structures.



PREMIUM QUALITY

■ Foundation waterproofing

■ For residential and light commercial construction

■ For vertical and horizontal applications

Reliable Long Term Protection

DELTA[®]-MS

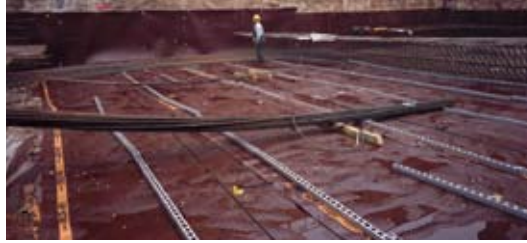
For permanently dry basements.

PREMIUM QUALITY

DELTA[®]-MS is a highly effective waterproofing membrane on poured concrete as well as block foundations.



- ① Ground Water Seepage
- ② DELTA[®]-MS Foundation Waterproofing Membrane
- ③ Water Flow
- ④ Foundation Wall
- ⑤ Gravel
- ⑥ Drainpipe
- ⑦ Water To Collector Pump/Sump
- ⑧ DELTA[®]-FAST^{ner}[™]
- ⑨ DELTA[®]-FLASH
- ⑩ Interior Floor
- ⑪ DELTA[®]-MS Underslab
- ⑫ Gravel Drainage Layer
- ⑬ DELTA[®]-MS Air-gap Membrane



Product Description

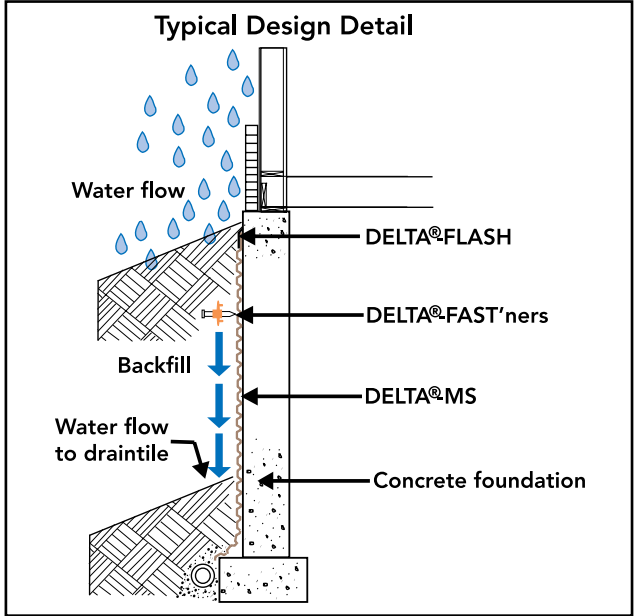
DELTA®-MS is a highly effective waterproofing protection system based on a uniquely formed air-gap membrane. The main component of DELTA®-MS is the plastic (HDPE) membrane, formed in a dimple pattern to create an air-gap at the foundation wall. This unique design allows any water getting past the dimpled plastic sheet to fall freely to the footer drain. This membrane is remarkably impermeable to water and water vapor and impervious to acids and other agents. DELTA®-MS HDPE is tough, resilient and durable with an expected service life of more than 50 years.

an air-gap is formed that will keep the basement dry. It can also allow construction moisture and water vapor from indoors to condense, flow down to the perimeter, and be drained away from the building. DELTA®-MS keeps ground moisture away from the foundation, which reduces interior dampness and musty odors. It continues to function despite any future foundation shifting or cracking.

Leakage Warranty

Please ask for details on DELTA®-MS leakage warranty.

(continued on back page)



Function

The membrane's key job, the first principle of fail safe water management is to keep water from ever touching the wall on it's way through the soil to the footing drainage systems.

DELTA®-MS provides two lines of defense. The first is an impermeable plastic sheet that is waterproof. The second is the dimpled structure that offers a free drainage path. In the event that water passes the first line of defense, it can flow freely down the air-gap to the footer drain. Unlike a coating, DELTA®-MS bridges all size cracks, ignores damage points, and deflects water as well as soil dampness. It also allows for the drainage of construction moisture to the footer drain.

Residential Construction

DELTA®-MS is up to one half the price of conventional waterproofing systems, and offers a complete protection system for foundation walls. When used on the exterior of poured concrete, concrete block, or preserved wood foundation (PWF),



Material	High Density Polyethylene (HDPE)
Color:	Brown
Dimple Height:	5/16" (8 mm)
Working Temperature:	-22°F to + 176°F -30°C to + 80°C
Air-Gap Volume:	~ 0.13 gal/ft ² (5.3 litres/m ²)
Compressive Strength:	~5200 psf (~250 kN/m ²)
Water Flow Rate (V)(GR=1):	12 gal/ min/ft (149 L/ min/m)
Water Flow Rate (H)(GR=0.1):	3.5 gal/ min/ft (44 L/min/m)
U.V. Stability:	Good
Bacteria Attack:	Unaffected
Toxicity:	Non-toxic, non-polluting
Freeze Thaw Cycle:	Unaffected
Service Life Expectancy:	The Life Of The Structure
Roll Sizes:	3.5'(1.07m) x 65.6'(20m) 5.0'(1.52m) x 65.6'(20m) 6.0'(1.83m) x 65.6'(20m) 6.6'(2.00m) x 65.6'(20m) 7.0'(2.13m) x 65.6'(20m) 8.0'(2.45m) x 65.6'(20m) 9.8'(3.00m) x 65.6'(20m)

Benefits of DELTA®-MS:

- acts as an air-gap and capillary breaking waterproofing and drainage membrane
- keeps soil moisture from touching the wall, condenses and drains construction moisture to the footing drains
- is a safe, non-toxic product that does not require any protective respiratory or handling devices during installation
- installs quickly
- bridges cracks and ignores damage points of foundation walls
- forms an independent skin around the basement
- does not require any special preparation of the concrete foundation wall, beyond code requirements
- is environmentally friendly - recyclable

Advantages of DELTA®-MS:

- high-density polyethylene is

impermeable to water and water vapor.

- outlasts the life of the structure (will not break down or disintegrate due to soil acids.)
- is non-polluting and non-toxic
- can be installed on damp or frosty surfaces
- installation is unaffected by temperatures (-22°F to +176°F/ -30°C to + 80°C)
- requires no maintenance
- available in large sheets, thereby minimizing seams
- unaffected by freeze thaw cycles
- spans across all cracks and other surface defects

Evaluation Reports (Certifications)

Foundation Waterproofing

Membrane - ICC ES, ESR-2303

Drainage Layer – CCMC # 12788-R

Dampproofing – CCMC # 12658-R

DELTA®